

PCR PLATES

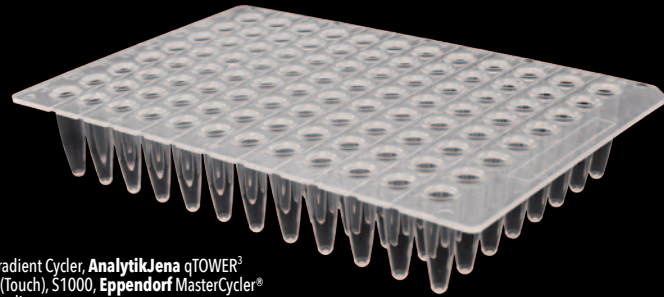
NOVASBIO multi-well PCR Plates, with their ultra-thin wall design, ensure rapid and efficient heat transfer between tube contents and cyler block.



Manufactured from virgin, medical grade polypropylene and certified free from RNase, DNase, Human DNA and pyrogens, these plates offer exceptional compatibility across the major cyler brands.

96 well, No Skirt

- Broad cyler compatibility
- Available in Low Profile 0.1ml version for FAST blocks
- Single notch corner at H1

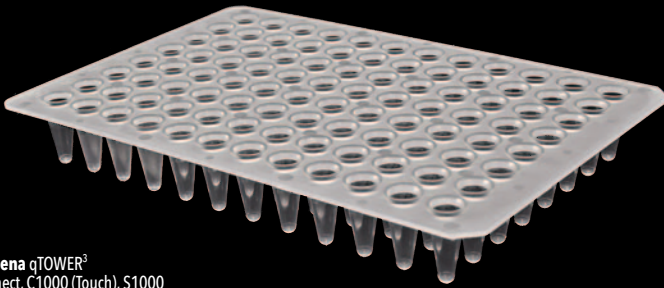


Cycler: **Agilent** Mx3000P/4000/Gradient Cyler, **AnalytikJena** qTOWER³
Compatibility: **Bio-rad** CFX Touch, C1000 (Touch), S1000, **Eppendorf** MasterCycler[®] ep Gradient, ep Realplex, Gradient

CATALOG NO.	VOLUME	DESCRIPTION	PACK	CASE
PCR96-FLT-C	0.2ml	PCR 96 Well Plates, No-Skirt, Clear	10 Plates	10 Packs

96 well, Low profile, No Skirt

- Broad cyler compatibility
- Low Profile wells with reduced volume (0.1ml) for use in FAST blocks
- Available in white for a superior signal to noise ratio
- Single notch corner at H12

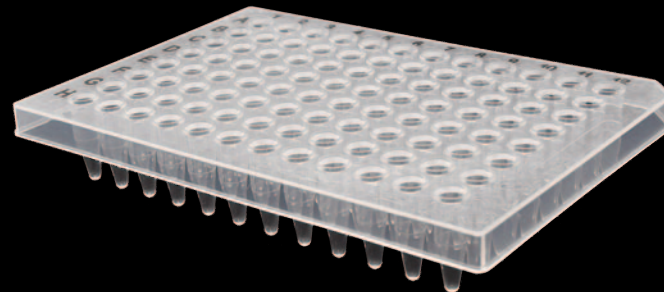


Cycler: **Agilent** AriaMx, **AnalytikJena** qTOWER³
Compatibility: **Bio-rad** CFX96 Touch/Connect, C1000 (Touch), S1000

CATALOG NO.	VOLUME	DESCRIPTION	PACK	CASE
PCR96-LP-FLT-C	0.1ml	PCR 96 Well Plates, No-Skirt, Clear	10 Plates	10 Packs
PCR96-LP-FLT-W	0.1ml	PCR 96 Well Plates, No-Skirt, White	10 Plates	10 Packs

96 well, Half Skirt

- Half skirt style provides increased rigidity
- Traditional profile, flat-top plate
- Skirt allows for labeling and barcodes
- High contrast alphanumeric lettering for easy well identification
- Single notch corner at A12

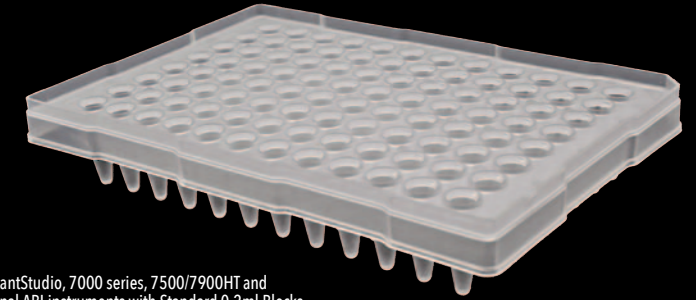


Cycler: **Agilent** Mx3000P, 4000, Gradient Cyler, **AnalytikJena** qTOWER³
Compatibility: **Eppendorf** MasterCycler[®] ep Gradient, ep Realplex, Gradient

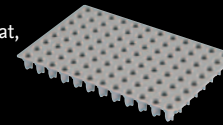
CATALOG NO.	VOLUME	DESCRIPTION	PACK	CASE
PCR96-HS-C	0.2ml	PCR 96 Well Plates, Clear, Half Skirt	10 Plates	5 Packs

96 well, Half Skirt, ABI compatible

- Elevated rim around plate
- Fits ABI Standard Cyclers and Sequencers
- Standard volume wells (0.2ml)
- Single notch corner at A12



For SeptaMat, see page 10

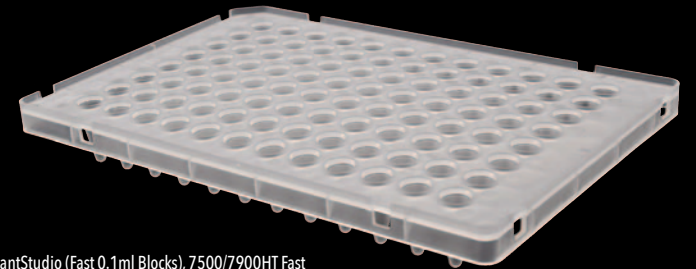


Cycler: **ABI** QuantStudio, 7000 series, 7500/7900HT and additional ABI instruments with Standard 0.2ml Blocks
Compatibility: **AnalytikJena** qTOWER³

CATALOG NO.	VOLUME	DESCRIPTION	PACK	CASE
PCR96-AB-C	0.2ml	PCR 96 Well Plates, Clear, Half Skirt	10 Plates	5 Packs

96 well, Half Skirt, Low profile, ABI compatible

- Elevated rim around plate
- Fits ABI Fast Cyclers
- Low Profile wells with reduced volume (0.1ml)
- Single notch corner at A1

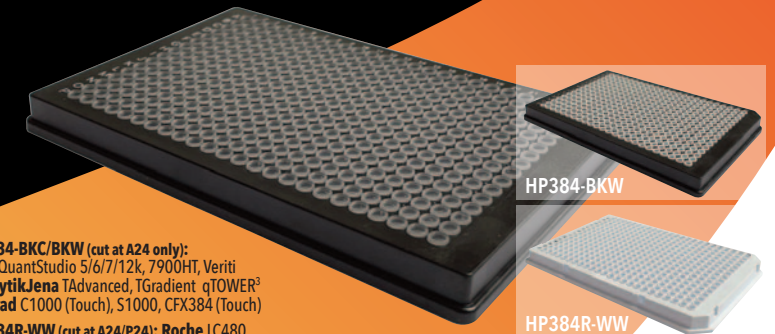


Cycler: **ABI** QuantStudio (Fast 0.1ml Blocks), 7500/7900HT Fast and additional ABI instruments with Fast 0.1ml Blocks
Compatibility: **AnalytikJena** qTOWER³

CATALOG NO.	VOLUME	DESCRIPTION	PACK	CASE
PCR96-LP-AB-C	0.1ml	PCR 96 Well Plates, Clear, Half Skirt	20 Plates	5 Packs

384 well, Full Skirt

- Automation-friendly
- Broad compatibility with 384-block thermal cyclers
- Clear version with single notch at A24
- White version designed for Roche[®] Lightcycler[®] 480 with dual notch corner at A24, P24



Cycler: **HP384-BKC/BKW** (cut at A24 only): **ABI**, QuantStudio 5/6/7/12k, 7900HT, Veriti
Compatibility: **AnalytikJena** TAdvanced, TGradient qTOWER³, **Bio-rad** C1000 (Touch), S1000, CFX384 (Touch), **HP384R-WW** (cut at A24/P24): **Roche** LC480

CATALOG NO.	VOLUME	DESCRIPTION	PACK	CASE
HP384-BKC	40µl	PCR 384 Well Plates, Full Skirt, Black frame, Clear wells	10 Plates	5 Packs
HP384-BKW	40µl	PCR 384 Well Plates, Full Skirt, Black frame, White wells	10 Plates	5 Packs
HP384R-WW	40µl	PCR 384 Well Plates, Full Skirt, White frame, White wells, Roche style	10 Plates	5 Packs